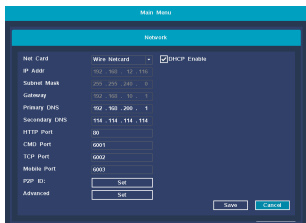


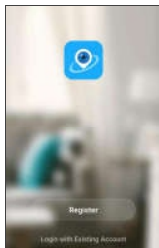
- Enter into "Main menu→System→Network Config" menu.
- Select "DHCP", and click "save" button, it'll request IP address from the DHCP server automatically.
- The configuration is **Successful**, if the IP address is not 0.0.0.0. After refresh. Otherwise, please set the IP address and gateway information Manually.



7 Mobile Phone view

Step 1: Install software

Scanning the QR code in the user manual to download, and install it.

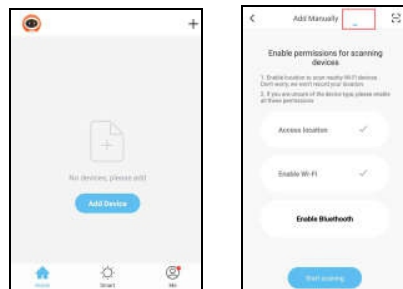


- Download QR code
- Startup

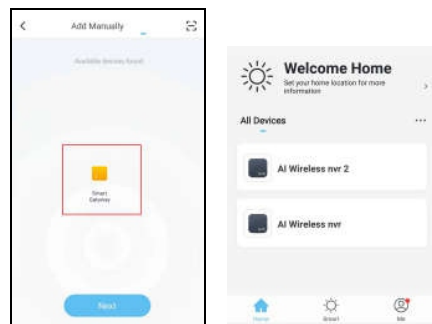
Step 2: Tap "Register" button to register Account.

Step 3: Add device

After login, Tap "+" button in the main interface view to open the device adding view.



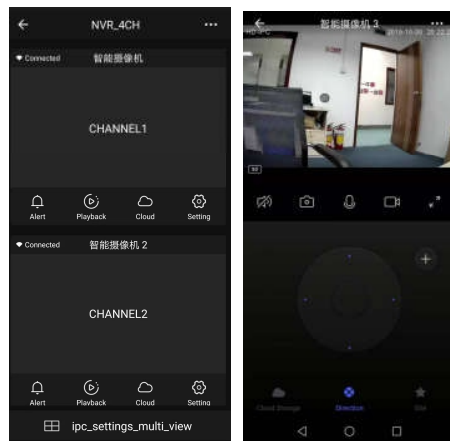
- add device window
- tap autosearch



- select device
- device list

Step 3: Live view

Tap the online device icon in the device list, the channel's video will be connected and display automatically.



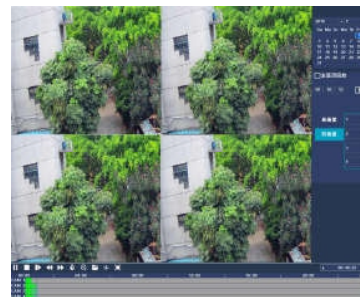
- Channel list
- Live view

Icon	description	Icon	description
	Device info and share		Multi-screen
	Alarm info list		Snap
	Playback on device		Talk
	Cloud Record		Record
	Channel Setting		SD/HD

8 Other operation

8.1 Video playback

Steps: Right click to select playback → login → select single or multi channel playback mode → select channel → select date → double click to start play record.



8.2 Video backup

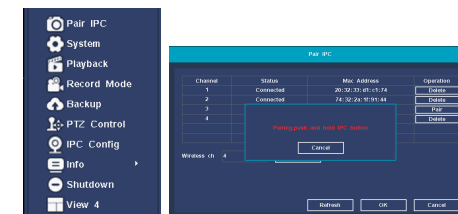
Steps: Insert U disk to USB interface → Right click to select Main menu → login → select backup → select channel → set starting time and ending time → click "Search" button → select the record → select or create new file → click "Backup" button to backup record.



8.3 Add camera

Add or replace wireless camera, please follow the steps below.

- Wait 1 minutes for camera start up.
- Enter "Main menu→Pair IPC" window, →delete not connected camera → Click "Pair" button, pop-up a textbox → Push the pair button in IPC within 5 seconds. pair successfully when display "connected" in status column.
- Repeat step b, then click [OK] button to finish.



Hiseepro download QR code

