

BHT-006 Series Thermostat WIFI Type



TECHNICAL DATA

Power Supply: 95~240 VAC, 50~60Hz
 Current Load: 5A (water heating, gas boiler), 16A (electric heating)
 Sensor: NTC3950, 10K
 Accuracy: ±1°C
 Set Temp. Range: 5-35°C
 Room Temp. Range: 5-99°C
 Display Temp. Range: 5~99°C
 Ambient Temp.: 0~45°C
 Ambient Humidity: 5~95% RH (Non Condensing)
 Storage Temp.: -10~45°C
 Power Consumption: <1.5W
 Timing Error: <1%
 Shell Material: PC +ABS (Fireproof)
 Installation Box: 86*86mm Square or European 60mm Round Box
 Wire Terminals: Wire 2 x 1.5 mm² or 1 x 2.5 mm²
 Protection Class: IP20
 Buttons: Capacitive Touch Buttons

FEATURES

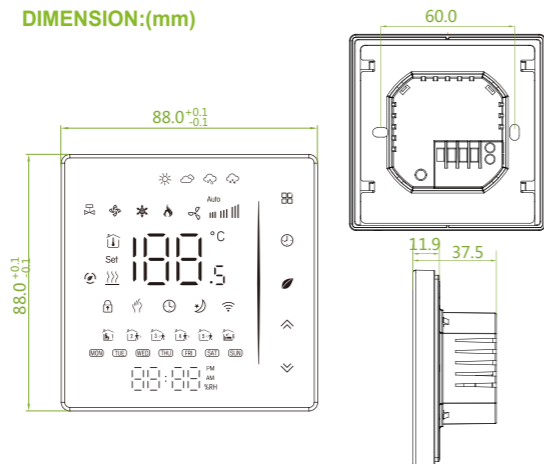
On Appearance

1. LED display, more friendly interface;
2. Touch operation buttons, smoother interaction;
3. The ultra-thin embedded panel perfectly fits all kinds of walls;
4. The borderless small rounded corner design is simple and atmospheric;
5. Compatible with standard 86mm square cassettes and 60mm European cassettes to meet all installation environments;

On Functionality

1. Rich function options, Modbus, WIFI, keycard, etc., to meet all your needs;
2. Strict temperature control accuracy (±1°C) to provide the warmth you want;
3. Power off protection, save all your settings safely;
4. Provide weather information and humidity display
5. Preset adjustment of 5+1+1 mode in a week, programmable setting of 6 time periods a day, green energy saving, Less cost, more intelligent and environmental protection;
6. Support the creation of product local groups/shares to achieve unlimited centralized control of the number of products/multi-terminal control;
7. Perfect access: Tmall Genie, Amazon echo, Google Home, full experience new voice control method;

DIMENSION:(mm)



For Water Heating/Boiler/Electric Heating

Thank you for purchasing our products, please read the following terms before installation and use:

- Please confirm that this product is suitable for your heating equipment before installation;
- *Before installation or maintenance, please make sure to keep the power off;
- *Please strictly follow the wiring diagram for wiring installation;
- *Installation to the wall, please confirm that the fasteners are suitable for this product;
- *Do not pull the cable too hard, otherwise the product will be damaged;
- *If a hard plastic wire is used in the installation process, it must be bent to an appropriate angle in advance;
- *Please arrange for professionals to install;
- *Please contact the after-sales service for equipment failure, please do not try to repair it yourself;
- * After installation, please refer to this manual to check again to ensure normal and safe use, and keep this manual properly.

ABOUT YOUR THERMOSTATS

The BHT- 006 range has been developed to control electric underfloor, water heating or water/ gas boiler systems. These units are designed for use in commercial, industrial, civil and domestic properties

MODEL DEFINITION

GA: Water heating, 5A
 GB: Electric floor Heating, 16A
 GC: Water/Gas Boiler, 5A
 L: Backlight
 N: Modbus Communication
 W: Wifi
 S2: Both internal sensor and floor external sensor

For example: BHT-006GA

In the box you will find

Thermostat	1pc	Screws	2pc
User Guide	1pc	Wall plate	1pc
QC Passed	1pc		

(Floor sensor is Optional)

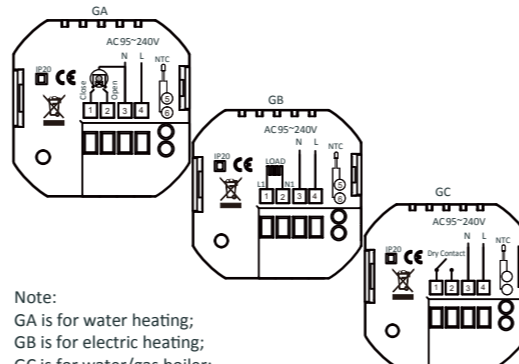
BEFORE WIRING AND INSTALLING

1. Read these instructions carefully. Failure to follow them could damage the product or cause a hazardous condition.
2. Check the ratings given in the instructions and on the product to make sure the product is suitable for your application.
3. Installer must be a trained, experienced service technician.
4. After installation is complete, check out product operation as provided in these instructions.



CAUTION
 Electrical Shock or Equipment Damage Hazard. Can shock individuals or short equipment circuitry.
 Disconnect power supply before installation.

WIRING

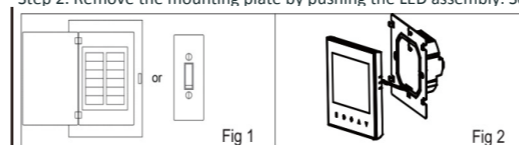


Note:
 GA is for water heating;
 GB is for electric heating;
 GC is for water/gas boiler;
 NTC and Modbus is optional.

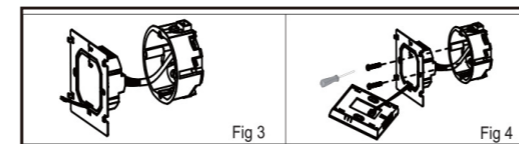
INSTALLATION

Your thermostat is suitable for installation within a standard 86mm pattern box or European 60mm pattern box.

- Step 1. Keep power off. See Fig 1.
- Step 2. Remove the mounting plate by pushing the LED assembly. See Fig 2.

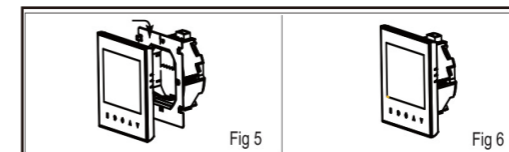


- Step 3. Connect power supply, load into the appropriate terminals. (see "Wiring your thermostat" for details and Fig 3).
- Step 4. Fix the mounting plate into the wall with screws in the box. See Fig 4.

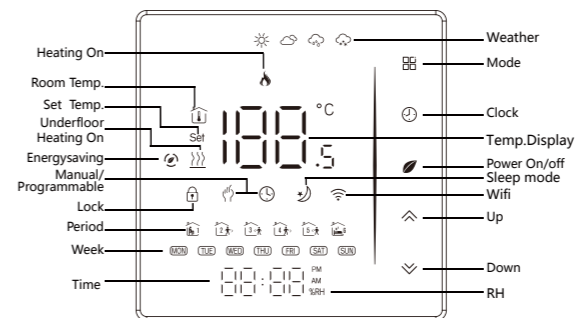


- Step 5. Fix the thermostat body and the mounting plate by the lower button. See Fig 5.

Step 6. Installation complete. See Fig 6.



HOME SCREEN QUICK REFERENCE



Note: The weather and humidity will be synchronized within 1 hour after the device is connected to the Internet for the first time, and the weather will be synchronized every hour thereafter.
 Press the / in the power-on state to display the humidity and set temperature

OPERATION

During Power On

1. Power On/off: Press to turn the thermostat on/off.
2. Function & Programmable

Touch to change between manual mode and programmable mode. In manual mode, will show on the display, . In programmable mode, will show on the display.

3. Setting Temperature

In the programming mode, the temperature setting and time setting will be locked. If the user wants to adjust, he must first adjust the thermostat to manual mode by pressing the key.

In the mode of manual, press / to set the desired temperature.

4. Adjusting/Setting the Clock

Press to set minute, hour and weekday. By using the / . Press once more to confirm and exit.

5. Locking your Thermostat

Press and hold the for 5 seconds to lock/unlock your thermostat In item 3 of high senior options, you can select full lock or half lock.

6. Adjusting/setting the Program Schedules

When Wi-Fi connection is made, your thermostat will automatically accept the program schedule made via the APP on your device. If the schedule is set through the APP, after the APP completes the schedule setting, the thermostat needs to be turned off once.

If the thermostat does not establish a Wi-Fi connection, manually set the schedule see below for detailed instructions: To set the program schedules through your thermostat (NOT via your smartphone/tablet) simply follow the instructions as below:
 Please note: Setting the programme schedule through your thermostat can only be carried out if there is no WiFi connection between your thermostat and smartphone/tablet.

Press icon four times in a row. You can see "MON TUE WED YHU FRI" and , and the minutes of time are flashing.

Use / to set the minutes;
 Press the icon again, the hour of the time will flash, set the hour by / ;
 Press the icon again, the temperature setting will flash, set the temperature by / ;
 This completes the setting of periods1.

In the same way, complete the settings of periods2, 3, 4 and 5 (display periods1,2), 5 (display periods3, 4).

Press the icon once more to enter the Saturday schedule settings (you will see the SAT in the upper left corner of the screen). Repeat the above process to set the period and temp. and Sunday schedule.

Press the icon once more to confirm and exit.

Default settings for program schedule

Time display	WEEKDAY (MONDAY – FRIDAY) (1 2 3 4 5 shows on screen)		WEEKEND (SATURDAY) (6 shows on screen)		WEEKEND (SUNDAY) (7 shows on screen)	
	TIME	TEMPERATURE	TIME	TEMPERATURE	TIME	TEMPERATURE
Period 1	06:00	20°C	06:00	20°C	06:00	20°C
Period 2	08:00	15°C	08:00	20°C	08:00	20°C
Period 3	11:30	15°C	11:30	20°C	11:30	20°C
Period 4	13:30	15°C	13:30	20°C	13:30	20°C
Period 5(1+2)	17:00	22°C	17:00	20°C	17:00	20°C
Period 6(3+4)	22:00	15°C	22:00	15°C	22:00	15°C

A separate schedule may be set for weekdays (Mon – Fri) and for weekends (Sat or Sun).

7. Checking the Temperature of Floor Sensor

Press and hold the arrow for 5 seconds to display the temp. of floor sensor. If there is no external external sensor, "err" will be displayed.

8. Setting the Functions and Options

During Power Off, press and hold and for 8 sec. in the order to reach system function. Then press to scroll through the available functions, and use the / arrows to change the available options. All settings are confirmed automatically.

Code	Function	Setting and options	Default
1	Temperature compensation	-9 to 9 °C (for internal sensor)	-3
2	Deadzone Temperature.	1-5°C	1
3	Button Locking	00:All buttons are locked except power button. 01:All buttons are locked.	01
4	Sensor typer	In:Internal Sensor(to control the temp.) Ou:External Sensor(to control the temp.) AL:Internal/External Sensor (Internal sensor to control the temp., external sensor to limit the temp.)	AL
5	Min.Set Temp.	5-15°C	05
6	Max.Set Temp.	15-45°C	35
7	Display Mode	00 : Display both set temp. and room temp. 01 : Display set temp. only	00
8	Low temperature protection setting.	0-10°C	00
9	High temperature protection setting.	25-70°C	45
A	Economy Mode	00: Non-energy saving Mode 01: Energy saving mode	0
B	Economy Temp.	0-30°C	20
C	Daytime display brightness(6:00-22:00)	0-8	1
D	Brightness at night (22:00-6:00)	0-8	1
E	Reset	00: No factory reset; 01: Factory reset	00
F	Version number		U2

ABOUT WIFI

WI-FI CONNECTION

Before using your Wi-Fi thermostat for the first time, you must configure the Wi-Fi signal and settings through your smartphone or tablet. This will allow communication between your connected devices.

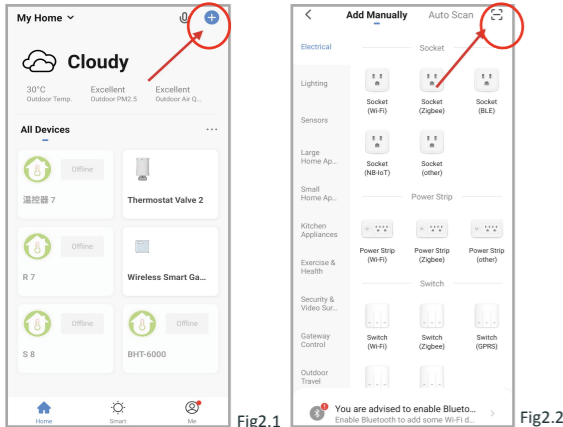
Step 1 Download your APP (Fig1-1)



Search for "Smartlife" in Apple Store or Google Play or use a browser to scan the QR code above (Figure 1-2), and complete account registration and installation according to the guidance of the APP.

Step 2. Connect the thermostat Check the tutorial below to

Method 1: Scan the QR code to configure the network guide (Fig 2.1-Fig 2.3)



Scan this QR code

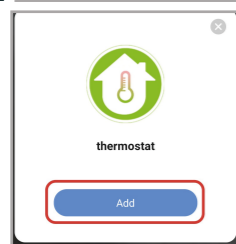


Fig2.3

Method 2: Ordinary distribution network guidance (Fig. 2. 1&Fig. 2.3.1)

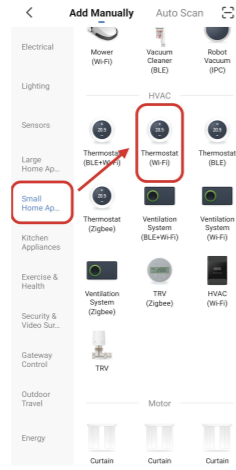


Fig2.3.1

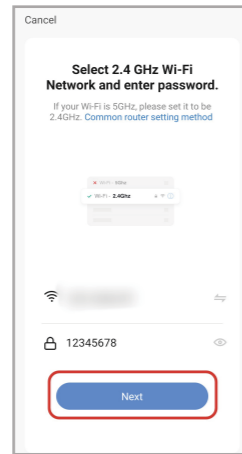


Fig2.5

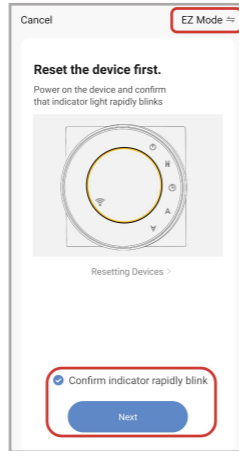


Fig2.4

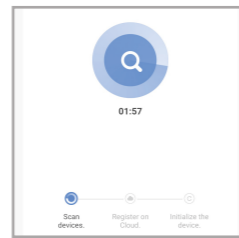


Fig2.6

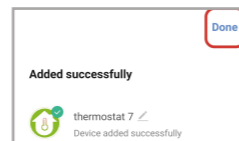


Fig2.7

Network distribution mode:

1、EZ Mode

When the thermostat is off, press and hold the "⌵" until the thermostat screen flashes quickly and displays the "📶" icon, and then operate according to the following figure (Fig 2.4-Fig 2.7).

2、AP Mode

When the thermostat is off, press and hold the "⌵" until the thermostat screen flashes slowly and the "📶" icon is displayed (if the "📶" icon appears, continue to press the "⌵" until the thermostat screen flashes slowly and displays the "📶" icon), and then operate according to the following figure (Fig 2.8-Fig 2.14).

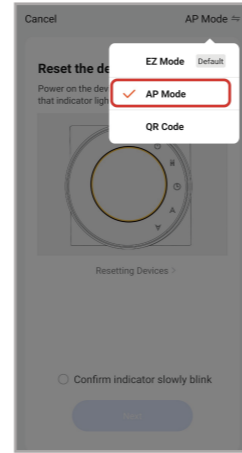


Fig2.8

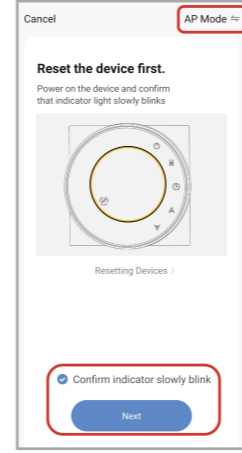
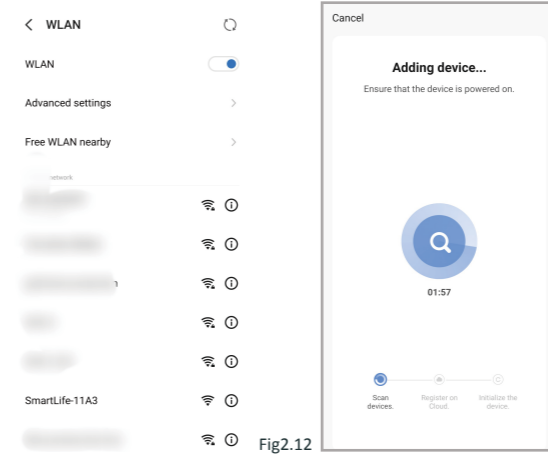


Fig2.9

APP operation interface description (heating thermostat)

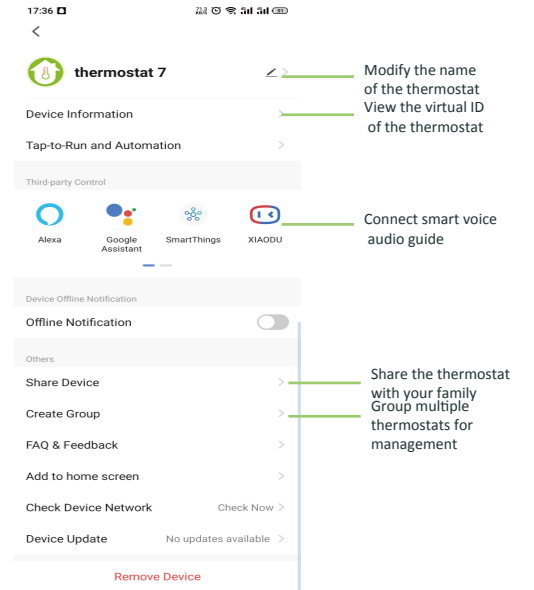


After connecting to this hotspot, return to the "smartlife" APP

Fig2.14



More settings



SIMPLE EXCEPTION HANDLING

No.	Phenomenons	Handling
1	Power is on but without display.	*Check if the terminals between LCD panel and Power Unit Box is loosen.
2	Without output but display works.	* Usea new LC panel or new Power Unit Box to replace the old one.
3	Room Temp. Is a little different from the actual.	* Do temperature calibration in item 1 of high senior options

SERVICE

Your thermostat carries an 24 months warranty from date of purchase. Service outwith the warranty period may incur a charge. More detail please contact with us directly.